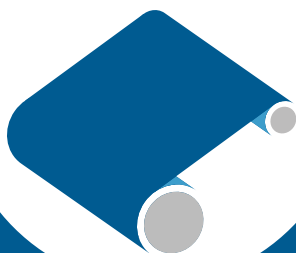
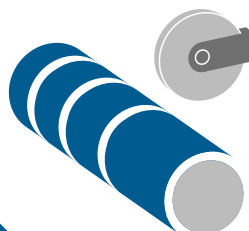


## EQUIPMENT FOR EFFICIENT FILM CONVERTING

REWINDING



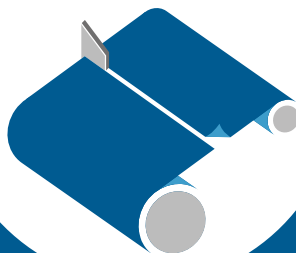
SLITTING



LABELING



TRIMMING



- ✓ no more waste and shortends
- ✓ no more claims from customers
- ✓ no more shipping mistakes, returns, refunds
- ✓ no more hassle
- ✓ 40% higher productivity
- ✓ no material waste

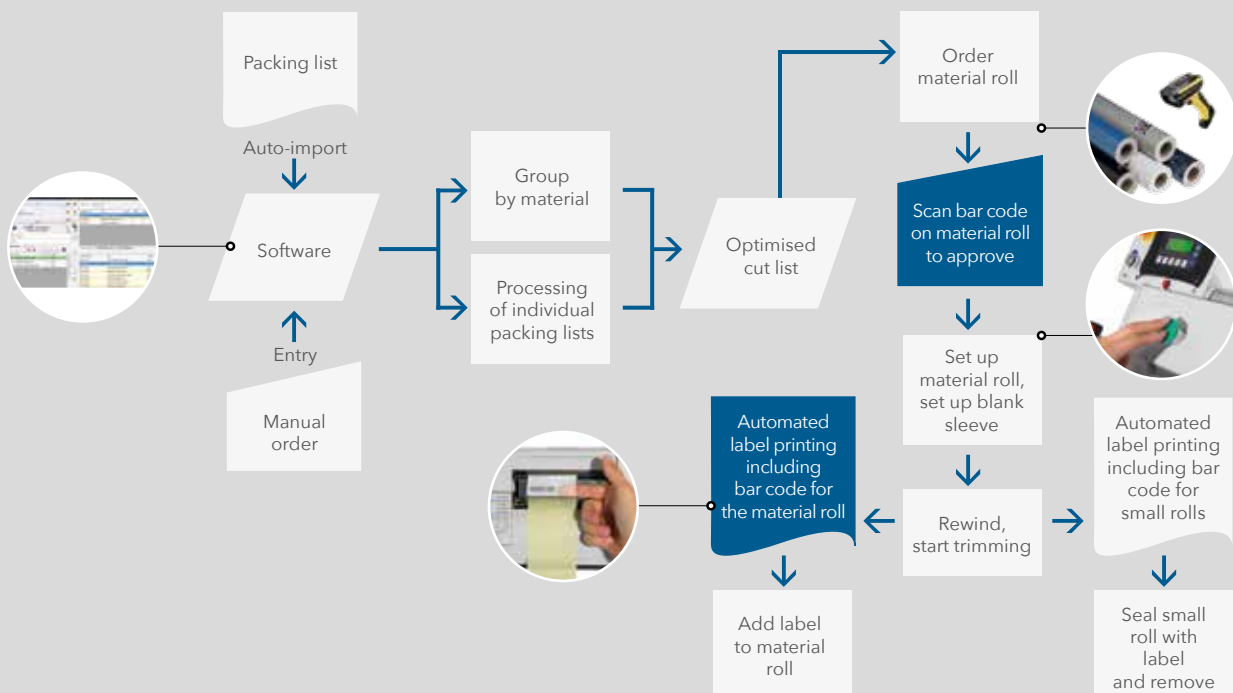
# THE IDEAL SOLUTION FOR FILM CONVERTING

NEPATA GmbH specialises in developing machines and software to support in converting and trimming jobs with film media and offers a wide range of rewinding, trimming and slitting or cutting machines made in Germany for any advertising technology application. With their highly efficient rewinding system for film-type materials the machines meet the latest technology requirements and are successfully being used all over the world.

The necessary cutting processes along the supply chain from manufacturers all the way to service providers in the advertising technology industry are both a burden and opportunity for suppliers - only those who manage to produce precision material cuts without high labour costs can offer their customers a wide range of media with quick delivery times at competitive prices whilst avoiding waste and loss.

The high efficiency of the rewinding system for film media offered by the UA series machines, for which a European patent is pending, is demonstrated by both the automation of the converting processes and the significant time savings. The greater precision compared to other processes minimises material loss and waste.

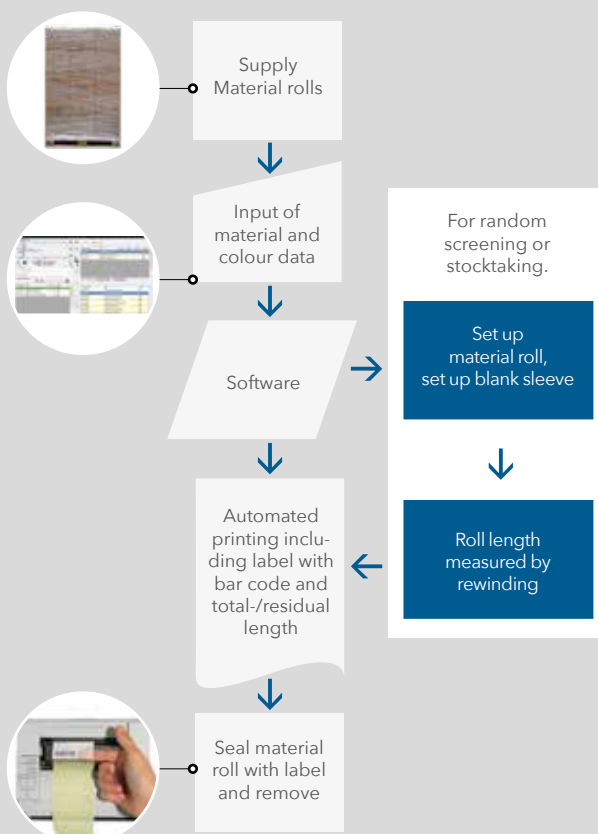
## ROLL MODE



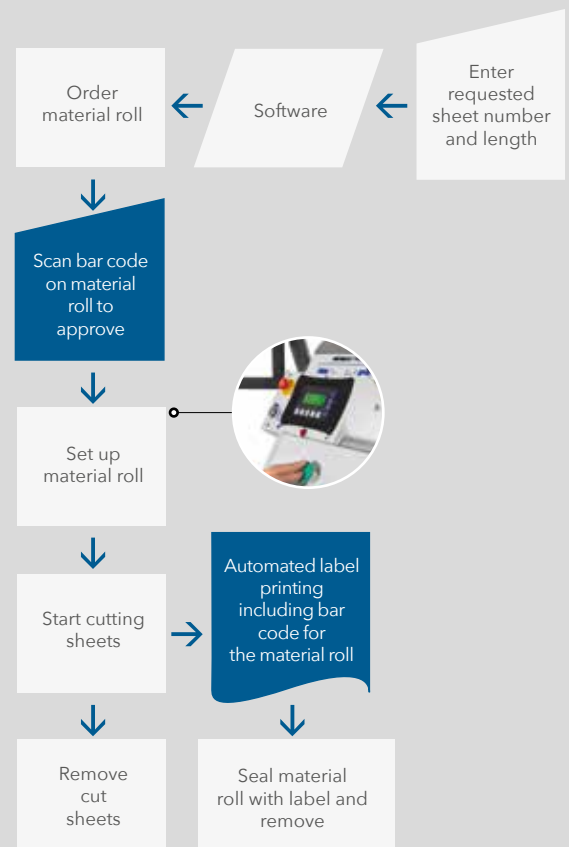
## OUR PROS

- ✓ **No more waste** and shortends **due to inaccurate converting**
- ✓ **No more claims** from customers because of short rolls
- ✓ **No more shipping mistakes, returns, refunds**
- ✓ **No more hassle**
- ✓ **Higher productivity, efficiency, better ergonomics and safety**
- ✓ **Time savings** of 40% and more compared to simple converting equipment
- ✓ **More profit** due to less material waste and less replacement shipments to customers for short and wrong rolls
- ✓ **Successful claims** against manufacturer because of lot no tracking
- ✓ **Easy stocktaking** by barcode labels with roll lengths on all rolls

### GOODS IN / INVENTORY

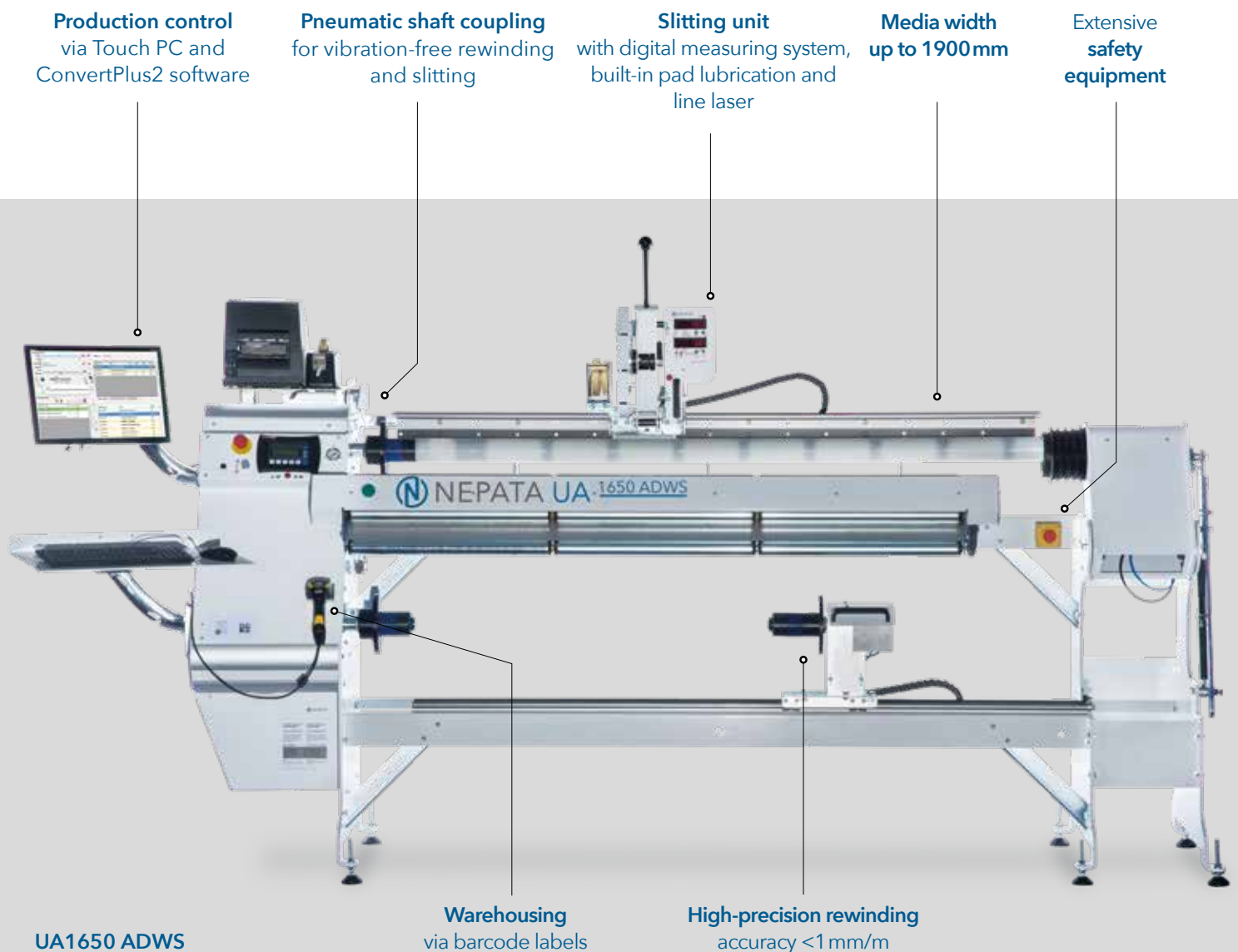


### SHEET MODE



# THE NEW INDUSTRY STANDARD FOR FILM CONVERTING

The world's most successful vinyl film distributors  
run NEPATA converting equipment





Some of the materials our machines can process:

- ✓ Self-adhesive films
- ✓ Flex films
- ✓ (Photo) paper
- ✓ Sandblasting films
- ✓ Flock films
- ✓ Wallpaper
- ✓ Masking films
- ✓ Mesh
- ✓ Reflective films
- ✓ Magnetic films
- ✓ Banners
- ✓ Digital print media
- ✓ Car wrapping films
- ✓ Window tinting films

| FACTS AND DATA  | UA770    | UA1650 | UA1650 ADWS | 1900 ADWS |
|---|----------|--------|-------------|-----------|
| Internal <b>digital controller</b>  | ✓        | ✓      | ✓           | •         |
| <b>ConvertPlus2</b> interface   | ✓        | ✓      | ✓           | •         |
| <b>Ergonomic swivel shaft</b>   | •        | •      | ✓           | ✓         |
| <b>Pneumatic shaft coupling</b>   | •        | •      | ✓           | ✓         |
| <b>Automatic cross cutting</b>  | ✓        | ✓      | ✓           | •         |
| <b>FastCut mode</b> for faster sheet cutting via ConvertPlus2                       | ✓        | ✓      | ✓           | •         |
| <b>Coreless winding</b> at approx. 50mm inner diameter                              | optional | •      | •           | •         |
| <b>Splicing mode</b> for splicing part rolls together                               | optional | •      | ✓           | •         |
| <b>Slitting unit</b> with <b>dual digital measuring unit</b>                        | •        | •      | ✓           | ✓         |
| <b>Pad lubrication</b> for slitting blade   | •        | •      | optional    | optional  |
| <b>Line laser</b> for slitting blade  | •        | •      | optional    | optional  |
| <b>High rewinding</b> precision of <1mm/m   | ✓        | ✓      | ✓           | •         |
| <b>Rewinding speed</b> at up to 1.5 m/s   | ✓        | ✓      | ✓           | •         |
| <b>ConvertPlus2 software</b><br>for labeling rolls and controlling flow of material | ✓        | ✓      | ✓           | ✓         |
| <b>Extensive safety equipment</b>   | ✓        | ✓      | ✓           | ✓         |

# UA 770

## Precise rewinding and trimming up to a width of 770mm

The UA770 rewinding and trimming machine was developed specifically for processing flock and flex films, as well as a variety of other media up to a width of 770 mm. It is often used by wholesale and retail logistics centres for textile finishing films. The UA770 reliably, accurately and quickly measures film rolls with a maximum diameter of 400 mm whilst cutting exact short rolls up to a diameter of 280 mm and sheets from the respective master rolls.

Combined with the control software ConvertPlus2 individual bar code labels containing the run length of the film, product data and much more information can – if necessary

– be attached to master as well as customer rolls. Using this bar code label, the films can be scanned before processing the rewinding job, thus verifying the product data and importing the residual length of the roll into the system. This effectively prevents many errors in the rewinding process. ConvertPlus2 supports several methods of reading in converting jobs – for example by scanning respective bar codes on the picking notes or even through fully automated import of electronic job data.

The single-sided shaft axles on the UA770 allow film rolls and paper cores to be mounted quickly and securely. The films themselves are

tensioned either with simple tension levers operated by the user, or pneumatically by the internal machine control.

The optional splicing mode allows for professional splicing of films controlled by the ConvertPlus2 software. With the FastCut feature, the process time can be shortened with sheet cutting via ConvertPlus2. An innovative tension shaft with an inner diameter of approx. 50 mm can also be used for coreless winding.



- ✓ **Rewinding speed** up to 1 m/s
- ✓ **Rewinding and trimming** as wide as 770 mm
- ✓ **Operation via ConvertPlus2 software** including bar code labels for short and master rolls
- ✓ **High rewinding accuracy** of <1 mm/m
- ✓ **Single side shaft** for **quick set up**
- ✓ **Splicing mode** to splice rolls together (optional)
- ✓ **FastCut for fast sheet cutting** (with ConvertPlus2)
- ✓ **Coreless winding** with approx. 50 mm inner diameter (optional)



## TECHNICAL DATA UA770



|                                    |                             |
|------------------------------------|-----------------------------|
| Max. material width .....          | 770 mm                      |
| Max. rewinding speed .....         | 1 m/s                       |
| Max. diameter rewinding roll ..... | 280 mm                      |
| Max. diameter unwinding roll ..... | 400 mm                      |
| Sleeve diameter .....              | 3" (2" optional)            |
| Trimming accuracy .....            | < 1 mm/m*                   |
| Measuring accuracy .....           | < 2 mm/m*                   |
| Max. material thickness .....      | 1 mm*                       |
| Max. roll weight .....             | 25 kg                       |
| Power supply .....                 | AC voltage 230V/50Hz - 60Hz |
| Power input .....                  | 400 W                       |
| Working environment .....          | + 5°C bis + 35°C            |
| Dimensions (h x d x w) .....       | 1608 mm x 535 mm x 1425 mm  |
| Weight .....                       | 280 kg                      |

\* Depends on material being used.  
We will gladly provide you with information.





## TECHNICAL DATA **UA1650**



|                                    |                               |
|------------------------------------|-------------------------------|
| Max. material width .....          | 1650 mm                       |
| Max. rewinding speed .....         | 1,5 m/s                       |
| Max. diameter rewinding roll ..... | 280 mm                        |
| Max. diameter unwinding roll ..... | 400 mm                        |
| Sleeve diameter .....              | 3" (2" optional)              |
| Trimming accuracy.....             | <1 mm/m*                      |
| Measuring accuracy.....            | <2 mm/m*                      |
| Max. material thickness .....      | 1 mm*                         |
| Max. roll weight.....              | 50 kg                         |
| Power supply .....                 | AC voltage 230V/50 Hz - 60 Hz |
| Power input.....                   | 1500 W                        |
| Working environment .....          | + 5°C bis + 35°C              |
| Dimensions (h x d x w) .....       | 1468 mm x 535 mm x 2645 mm    |
| Weight.....                        | 470 kg                        |

\* Depends on material being used.  
We will gladly provide you with information.



# UA 1650

## Precise rewinding and trimming up to a width of 1650mm

The highly efficient UA1650 rewinding and trimming machine is an absolute "must have" for film and vinyl manufacturers and distributors dealing with rewinding and finishing digital printing media, self-adhesive vinyl, car wrapping and window films, or more narrow flex- and flock films on a daily basis.

Unlike its "little sister" the UA770, the UA1650 offers a maximum working width of 1650mm. The UA1650 guarantees minimal material waste compared to manual processes. It offers high precision rewinding and trimming of films with an accuracy greater than 1 mm per meter. In addition to the inter-

nal control unit, length measurement, rewinding as well as the entire production, the control unit can be optionally run via touch PC using the ConvertPlus2 software. This also supports automatic label printing including bar code for short and master rolls for professional stock management and absolute minimisation of converting and packaging errors.

The sleeve diameter is 3", 2" are available as an option. The maximum diameter of mother rolls is 400 mm, short rolls can be wound up to a diameter of 280 mm. The maximum rewinding speed is 1.5 m/s, the maximum roll weight

50 kg. For film and vinyl distribution the UA1650 rewinding and trimming machine features impressive productivity and efficiency complete with extensive safety features.

With the FastCut feature, the process time can be shortened with sheet cutting via ConvertPlus2.

- ✓ **Rewinding speed** up to 1,5m/s
- ✓ **Rewinding and trimming** as wide as 1650 mm
- ✓ **Operation via ConvertPlus2 software** including bar code labels for short and master rolls
- ✓ **Automatic pneumatic tensioning**
- ✓ **High rewinding accuracy** of <1 mm/m
- ✓ **Adjustable tension shafts for quick set up**
- ✓ **FastCut** for fast sheet cutting (with ConvertPlus2)



# UA 1650 ADWS

## Precision converting center for rewinding, trimming and slitting

The UA1650 ADWS is NEPATA GmbH's most accurate and comprehensive converting solution and a globally established system for the film trade, as well as film and tape production. In addition to high-precision winding and automatic cutting to length, the UA1650 ADWS also supports precise slitting of a variety of film-like media up to a rest of 50 mm in width.

The continuous swivel shaft located at the top requires almost no force and is easy to use, while threading-in and threading-out of empty cardboard cores or finished slitted rolls takes mere seconds. The swivel shaft's adjustable stop position facilitates ergonomic working, even for the smallest employee. An automatic pneumatic coupling ensures

vibration-free winding and slitting. The slitting unit features a rotating circular blade that is lockable, if necessary. It is mounted on a smooth-running axial slide and can easily be positioned in absolute and relative dimensions using two digital displays. A simple touch of a button with the left hand blocks the axial slide and tensions the roll of film, which can now be slit using the right hand.

A line laser to indicate the blade position on the media roll is available as an option, as is a new type of pad lubrication system which lubricates the blade directly and economically with a lubricant, permanently cleaning and braking the blade. This system results in significantly better slitting results with most media.

The unwinder can accommodate rolls of film with a diameter of up to 400 mm. A maximum diameter of 280 mm can be rewound and slit on the upper shaft. The maximum media width for winding is 1650 mm, while rolls with a width of up to 1900 mm can be loaded for slitting. With the FastCut feature, the process time can be shortened with sheet cutting via ConvertPlus2.

- ✓ **Rewinding speed** up to 1,5m/s
- ✓ **Rewinding** as wide as 1650 mm **slitting** up to 1900 mm
- ✓ **Operation via ConvertPlus2 software** including bar code labels for short and master rolls

- ✓ **Easy to operate slitting unit** with dual digital display
- ✓ **High rewinding accuracy** of <1 mm/m
- ✓ **Adjustable swivel shaft for perfect ergonomics**
- ✓ **Pneumatic shaft coupling** for vibration-free rewinding and slitting
- ✓ **Minimum cutting width** at the left end of the film only 50 mm
- ✓ **FastCut for fast sheet cutting** (with ConvertPlus2)
- ✓ **Pad lubrication system for slitting blade** (optional)
- ✓ **Line laser for slitting blade** (optional)





## TECHNICAL DATA **UA1650 ADWS**



|   |                                  |
|---|----------------------------------|
| Max. working width rewinding .....      | 1650mm                           |
| Max. diameter rewinding short roll..... | 280 mm                           |
| Max. diameter unwinding roll .....      | 400 mm                           |
| Max. rewinding speed.....               | 1,5 m/s                          |
| Max. working width slitting.....        | 1900 mm                          |
| Max. roll diameter slitting .....       | 280 mm                           |
| Sleeve diameter .....                   | 3" (2" optional)                 |
| Min. slitting width on left end.....    | 50 mm                            |
| Trimming accuracy.....                  | <1 mm/m*                         |
| Measuring accuracy.....                 | <2 mm/m*                         |
| Max. material thickness .....           | 1 mm*                            |
| Max. roll weight.....                   | 50 kg                            |
| Power supply .....                      | AC voltage 230 V / 50 Hz - 60 Hz |
| Power input.....                        | 1500 W                           |
| Working environment .....               | + 5°C bis + 35°C                 |
| Dimensions (h x d x w) .....            | 1468 mm x 535 mm x 3145 mm       |
| Weight.....                             | 570 kg                           |

\* Depends on material being used.  
We will gladly provide you with information.



## TECHNICAL DATA 1900 ADWS



|                                       |                                  |
|---------------------------------------|----------------------------------|
| Max. material width .....             | 1900 mm                          |
| Max. roll diameter slitting .....     | 280 mm                           |
| Sleeve diameter .....                 | 3" (2" optional)                 |
| Min. slitting width on left end ..... | 50 mm                            |
| Slitting accuracy .....               | <1 mm/m*                         |
| Max. roll weight.....                 | 50 kg                            |
| Power supply .....                    | AC voltage 230 V / 50 Hz - 60 Hz |
| Power input.....                      | 1500W                            |
| Working environment .....             | + 5°C to + 35°C                  |
| Dimensions (h x d x w) .....          | 1468 mm x 535 mm x 3145 mm       |
| Weight.....                           | 490 kg                           |

\* Depends on material being used.  
We will gladly provide you with information.



# 1900 ADWS

## Precision slitting machine

The professional slitting machine 1900 ADWS was developed for fast and precise slitting of various types of media. Special emphasis was placed on excellent cut edges on self-adhesive films, digital print media, flock films, flex films and similar materials. These can be slit at the left edge of the film up to a minimum width of up to 50 mm.

The continuous swivel shaft requires almost no force and is easy to use, while threading-in and threading-out of empty cardboard cores or finished slitted rolls takes mere seconds. The swivel shaft's adjustable stop position facilitates ergonomic working, even for the smallest employee. An automatic pneumatic coupling ensures vibration-free winding and slitting. The 1900 ADWS features a rotating circular blade

that is lockable, if necessary. It is mounted on a smooth-running axial slide and can easily be positioned in absolute and relative dimensions using two digital displays. A simple touch of a button with the left hand blocks the axial slide and tensions the roll of film, which can now be slit using the right hand.

A line laser to indicate the blade position on the media roll is available as an option, as is a new type of pad lubrication system which lubricates the blade directly and economically with a lubricant, permanently cleaning and braking the blade. This system results in significantly better slitting results with most media.

The slitting shaft is automatically tensioned by means of compressed air. Various slitting modes are avail-

able, depending on the desired mode of operation. The knife can, for example, be permanently blocked axially, while rolls of film can be swapped, or the film remains tensioned, while the knife can be repositioned.

Rolls of film with a diameter of up to 280 mm can be slit. The 1900 ADWS can process rolls with a width of up to 1900 mm. The machine is operated via the internal controller and can be complemented by the extensive ConvertPlus2 software.

- ✓ **Slitting** up to 1900 mm
- ✓ **Operation via ConvertPlus2 software** including bar code labels for short and master rolls
- ✓ **Easy to operate slitting unit** with dual digital display
- ✓ **Adjustable swivel shaft for perfect ergonomics**
- ✓ **Pneumatic shaft coupling** for vibration-free rewinding and slitting
- ✓ **Minimum cutting width** at the left end of the film only 50 mm

- ✓ **Pad lubrication system for slitting blade** (optional)
- ✓ **Line laser for slitting blade** (optional)



# ACCESSORIES



## Lubrication system for slitting head with targeted wetting of the blade

Ensure lubrication during slitting processes for improved cutting results - but only where, when and as much as you want and need! No spray mists that spreads throughout the entire room. Say goodbye to expensive and environmentally harmful silicone spray cans! Lubrication at the right place and in the right amount needed for flawless slitting. Our unique flange lubrication system directly applies silicone oil or other lubricants at both sides of the cutting blade, thus also offering an added cleansing effect. Furthermore, the felt flanges with adjustable contact pressure can also exert a significant braking force on the traveling blade. Consequently, your cutting results are further improved. Also available as a retrofit solution for our ADW and ADWS models!



## Extendable slitting lever

The extendable slitting lever can be easily extended to almost twice the length for more control over the slitting blade dipping, less vibration and better overall slitting results.



## 2" Tension Chucks and Shafts

Tension shaft adapter for cardboard tubes with 2" inner diameter. The tension shafts can be quickly replaced, allowing for alternate use with the 3" elements included in the standard scope of delivery (also separately for winding and unwinding).



## Document Storage DIN A4

Document storage for archiving of processed slips or other documents. Magnetic holder for the front panel of a UA machine.





## Line laser for slitting position

Slit at exactly the spot you choose! Find the right edge of the film faster than ever! The new line laser provided on your NEPATA ADW or ADWS machine's slitting head saves you time during slitting, helps avoid mistakes and allows for even higher precision. The line laser reliably displays the slitting blade's exact position on any film or paper surface. A convenient switch on the slitting head allows the laser to be switched on or off at any time. Also available as a retrofit solution for our ADW and ADWS models!



## Manual Tape Dispenser with Base

Manual masking tape dispenser for mounting on the printer holder or on the slitting head of a UA series machine via a special socket.



## Automatic Tape Dispenser for Printer Holder

Automatic masking tape dispenser for mounting on the printer holder of a UA series machine.



## Stop Washer

Stop washers with matching maximum diameters for the purpose of winding and unwinding are available for rolls with a particularly large diameter. The washers are simply plugged on top of the clamping spigot and can be removed at any time. Variants for 2" and 3" clamping spigots are available.



## Set of Transport Rolls

To facilitate comfortable moving of a UA series machine, we offer a set of transport rolls with matching sockets for mounting on the machine body.



## Retaining Magnets

Practical retaining magnets for attaching documents, such as delivery notes, on a UA machine's front panel. Helps keep your hands free for scanning and operating the machine.



## ConvertPlus2 Software with ERP System/Interface

ConvertPlus2 Software for the integration of UA machines into your logistics process and your merchandise management system. The software has an AutoImport interface for reading delivery notes and product data. It can handle input from bar code scanners and provide custom-designed labels via a label printer. It is possible to create manual cutting jobs, process delivery notes in sequence or optimize production orders over multiple delivery notes.

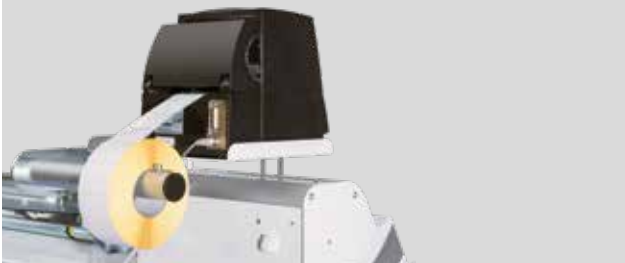
- ✓ **Full control** of your converting process
- ✓ **Zero out errors** due to matching of orders with material labels
- ✓ **Easy integration** with ERP systems one-way or two-way
- ✓ **User management** for job tracking
- ✓ Log files for **full trackability**
- ✓ **Lot number tracking** from manufacturer to end user
- ✓ **100% NEPATA product** - we are happy to customize ConvertPlus2 to your specific needs

## Computer periphery

PC with touch screen, full HD resolution, pre-configured COM port (RS 485), networking, etc.

Delivered pre-mounted to a sturdy ergonomic 3D pivot arm with swivel and tilt function and integrated cable routing. Direct thermal label printer / thermal transfer label printer including dispensing edge, maximum print width 104mm; Interfaces: USB, parallel, serial. Max. roll size 125mm diameter, resolution 203dpi. Delivery includes machine holder for all UA models. Modern 1D and 2D scanner gun for industrial use, USB interface. Delivery includes machine holder for all UA models.





## Large Roll Holder for Label Printers

Roll holder at the inner side of the case for the accommodation of large rolls for labels. Can be retrofitted to all UA machines.



## Tray for Keyboard and Mouse on 3D Pivot Arm

Practical storage space for a standard PC keyboard with mouse, incl. 3D pivot arm. White powder-coated sheet metal. Hole for cable passage.



## Slitting Blades

For the UA1650 ADWS as well as the 1900 ADWS we offer a selection of different slitting blades for various applications, we will be happy to advise you.

| ACCESSORIES                          | UA770 | UA1650 | UA1650 ADWS | 1900 ADWS |
|--------------------------------------|-------|--------|-------------|-----------|
| Lubrication system for slitting head | •     | •      | ✓           | ✓         |
| Extendable slitting lever            | •     | •      | ✓           | ✓         |
| 2" Tension Chucks and Shafts         | ✓     | ✓      | ✓           | ✓         |
| Document Storage DIN A4              | ✓     | ✓      | ✓           | ✓         |
| Line laser                           | •     | •      | ✓           | ✓         |
| Manual Tape Dispenser                | ✓     | ✓      | ✓           | ✓         |
| Automatic Tape Dispenser             | ✓     | ✓      | ✓           | ✓         |
| Stop Washer                          | ✓     | ✓      | ✓           | ✓         |
| Set of Transport Rolls               | ✓     | ✓      | ✓           | ✓         |
| Retaining Magnets                    | ✓     | ✓      | ✓           | ✓         |
| ConvertPlus2 Software                | ✓     | ✓      | ✓           | ✓         |
| Computer periphery                   | ✓     | ✓      | ✓           | ✓         |
| Large Roll Holder for Label Printers | ✓     | ✓      | ✓           | ✓         |
| Tray for Keyboard and Mouse          | ✓     | ✓      | ✓           | ✓         |
| Slitting Blades                      | •     | •      | ✓           | ✓         |

## SERVICES



### Installation and Commissioning

Delivery and on-site installation of a UA series machine, connection of PC and possibly additional components (if included in the scope of performance of NEPATA GmbH) as well as installation and configuration of the software. Calibration and commissioning.

### Machine Maintenance

One of our technicians can perform on-site maintenance on a UA machine and, if necessary, replace parts. During maintenance, the machine is checked completely. If necessary, firmware updates are performed.

### Staff Training

Intensive training of employees on site, instruction of all production modes and possible troubleshooting, use of the ConvertPlus2 software, working with real delivery notes in the actual working environment, duration depends on the number of participants and individual agreement of the scope of training.

### Technical Training (at our Location)

We introduce your technicians to the technical details of the UA machines at our premises. In addition to the design of mechanics and electronics, possible error scenarios are covered and disassembly and reassembly of individual components is practiced. .

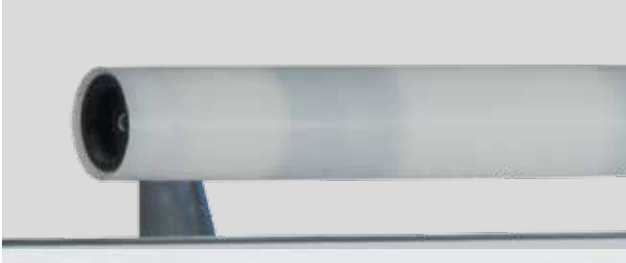
### Service Case

The most important mechanical and electronics spare parts as well as necessary special tools for self-repair, only recommended upon completion of technical training. The case is stored at your location and replenished after using a spare part.

### Process Consulting Digitalisation

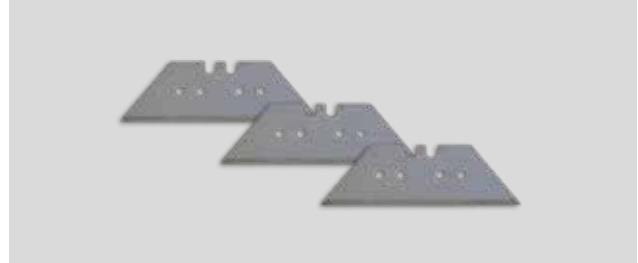
We would be happy to advise you on the digitalisation of your processes in your converting operation and the ideal integration of ConvertPlus2 with your existing ERP systems and processes. We would be pleased to submit you a non-binding offer.

## CONSUMABLES



### Slitting Sleeves

White slitting tubes for the pivot shaft



### Spare Blades

10 piece trapezoidal replacement blades for the cross-cutter of all UA series machines in a stable plastic case.



### Silicone Tension Elements

Blue clamping element made of silicone for all UA machines. The clamping elements are easy to replace. Regular replacement is recommended to ensure secure clamping.



### Removable Labels

Labels for thermal transfer and direct thermal printing, different dimensions, economy roll with 3,000 labels - suitable for the large roll holder. Removable adhesive, white base color.

| CONSUMABLES               | UA770 | UA1650 | UA1650 ADWS | 1900 ADWS |
|---------------------------|-------|--------|-------------|-----------|
| Slitting Sleeves          | •     | •      | ✓           | ✓         |
| Silicone Tension Elements | ✓     | ✓      | ✓           | ✓         |
| Spare Blades              | ✓     | ✓      | ✓           | •         |
| Removable Labels          | ✓     | ✓      | ✓           | ✓         |

Learn more about how NEPATA equipment can streamline your workflow and increase your profit.

[www.youtube.com/user/nepatagmbh](https://www.youtube.com/user/nepatagmbh)



## The advantages of our machines:

- ✓ **Highly efficient rewinding, trimming and slitting** of various film media
- ✓ **Machines made in Germany**, warranty and service in Germany
- ✓ **Machine patented** under European patent (patent number: 2426074). US patent pending (14/884,688)
- ✓ **Over 40 % gain in productivity** compared to manual cutting
- ✓ **Precision cuts** (variance of less than 1 mm per 1000 mm), therefore **less clippings, less waste, less rejects, less customer complaints**
- ✓ **Control software ConvertPlus2** with cut optimiser (combining same colours or dimensions)
- ✓ **Easy to use** via internal controller or touch-PC (optional)
- ✓ **Automatic label printing** including bar codes for **professional inventory** and to **prevent shipping errors**



**NEPATA GMBH**  
Hochstatt 6-8  
85283 Wolnzach  
Germany

Phone: +49 (0) 8442 95840-0  
Fax: +49 (0) 8442 95840-30  
E-Mail: [mail@nepata.com](mailto:mail@nepata.com)  
[www.nepata.com](http://www.nepata.com)

Member of:

