

REWIND. TRIM. SLIT.

EQUIPMENT FOR EFFICIENT FILM CONVERSION



 NEPATA UA 1650 ADW

REWINDING, TRIMMING AND SLITTING MACHINES

THE IDEAL SOLUTION FOR FILM CONVERSION

NEPATA GmbH specialises in developing machines and software to support in conversion and trimming jobs with film media and offers a wide range of rewinding, trimming and slitting or cutting machines made in Germany for any advertising technology application. With their highly efficient rewinding system for film-type materials the machines meet the latest technology requirements and are successfully being used all over the world.

The necessary cutting processes along the supply chain from manufacturers all the way to service providers in the advertising technology industry are both a burden and

opportunity for suppliers - only those who manage to produce precision material cuts without high labour costs can offer their customers a wide range of media with quick delivery times at competitive prices whilst avoiding waste and loss.

The high efficiency of the rewinding system for film media offered by the UA series machines, for which a European patent is pending, is demonstrated by both the automation of the conversion processes and the significant time savings. The greater precision compared to other processes minimises material loss and waste.

FLEXIBILITY FOR YOUR LOGISTICS PROCESS

→ Our control software ConvertPlus2 allows us to import and process data from various ERP systems.

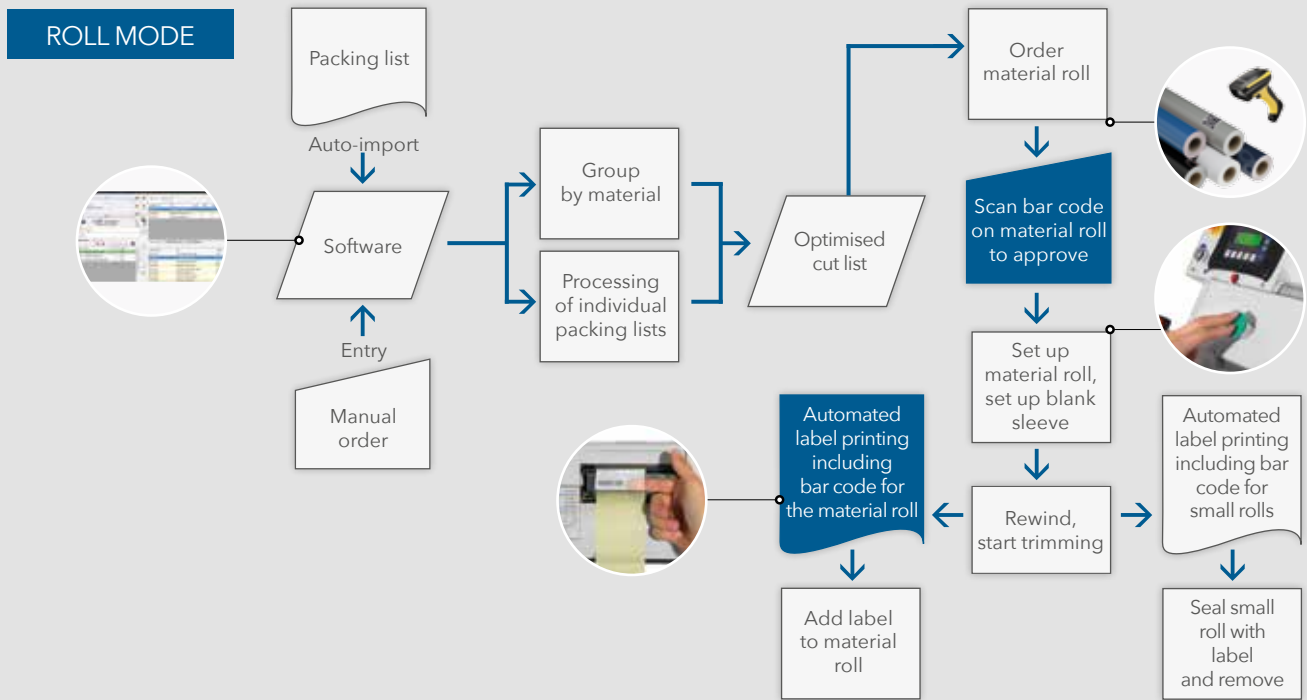
→ ConvertPlus2 and the UA series machines handle metric, imperial and American system data.

→ Labels for material rolls and small rolls can be freely configured and designed in ConvertPlus2.

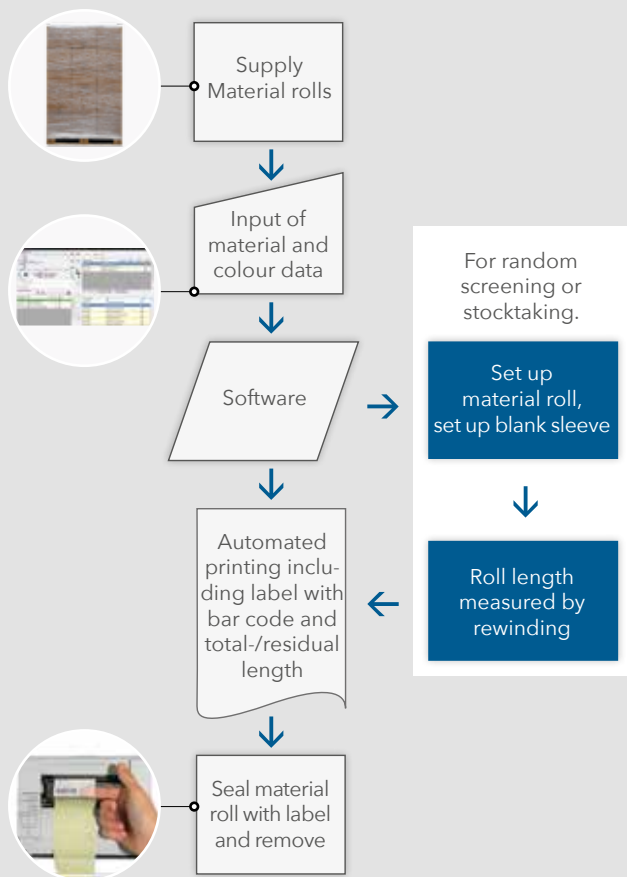
We will gladly adapt ConvertPlus2 to your processes and your workflow - ask us for a quote!

PROCESS INTEGRATION

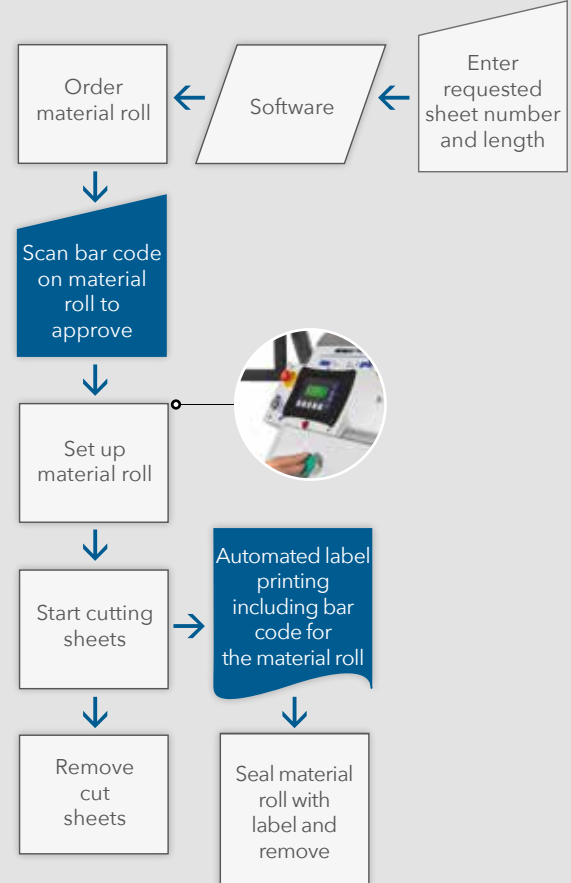
THE UA SERIES AND CONVERTPLUS2 SOFTWARE FULLY INTEGRATE INTO YOUR LOGISTICS PROCESSES



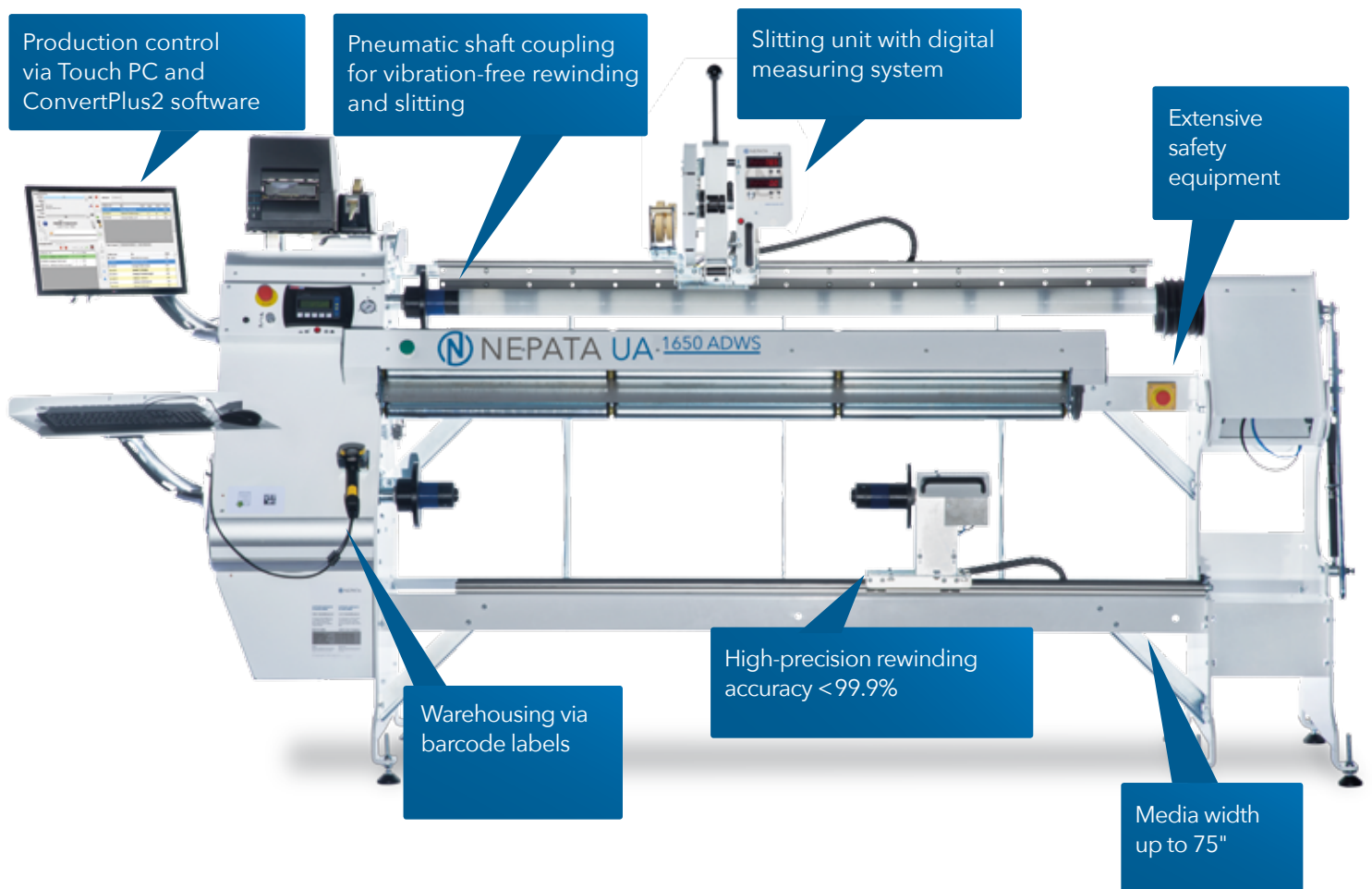
GOODS IN / INVENTORY



SHEET MODE



THE NEW INDUSTRY STANDARD FOR FILM CONVERSION



UA1650 ADWS

THE WORLD'S MOST SUCCESSFUL VINYL DISTRIBUTORS RUN NEPATA REWINDING EQUIPMENT

SOME OF THE MATERIALS OUR MACHINES CAN PROCESS

- Self-adhesive films
- Sandblasting films
- Masking films
- Car wrapping films
- Magnetic films
- Flex films
- Flock films
- Window films
- Digital print media
- Banners
- Photo paper
- Papers
- Wallpaper
- Reflective films
- Mesh

FACTS & DATA

	UA630	UA1650	UA1650 ADW	1900 ADW	UA1650 ADWS	1900 ADWS
Internal digital controller	✓	✓	✓	✓	✓	✓
ConvertPlus2 interface included	✓	✓	✓		✓	
Extensive safety equipment	✓	✓	✓	✓	✓	✓
Ergonomic swivel shaft			✓	✓	✓	✓
Automatic cross cutting	✓	✓	✓		✓	
Slitting unit with dual digital measuring unit			✓	✓	✓	✓
High rewinding precision of < 99.9%	✓	✓	✓		✓	
Rewinding speed at up to 5 ft/s	✓	✓	✓		✓	
ConvertPlus2 software for labeling rolls and controlling flow of material	✓	✓	✓	✓	✓	✓
Pneumatic shaft coupling					✓	✓

UA630 REWINDING AND TRIMMING MACHINE

- PRECISION TRIMMING AS WIDE AS 25"

The UA630 rewinding and trimming machine was developed specifically for processing flock and flex films, as well as a variety of other media up to a width of 25 inch. It is often used by wholesale and retail logistics centres for textile finishing films. The UA630 reliably, accurately and quickly measures film rolls with a maximum diameter of 16 inch whilst cutting exact short rolls up to a diameter of 11 inch and sheets from the respective master rolls.

Combined with the control software ConvertPlus2 individual bar code labels containing the run length of the film, product data and much more information can - if necessary - be attached to master as well as customer rolls. Using this bar code label, the films can

be scanned before processing the rewinding job, thus verifying the product data and importing the residual length of the roll into the system. This effectively prevents many errors in the rewinding process. ConvertPlus2 supports several methods of reading in converting jobs - for example by scanning respective bar codes on the picking notes or even through fully automated import of electronic job data.

The single-sided shaft axles on the UA630 allow film rolls and paper cores to be mounted quickly and securely. The films themselves are tensioned either with simple tension levers operated by the user, or pneumatically by the internal machine control.

FACTS & DATA

- Rewinding speed up to 3 ft/s
- Rewinding and trimming as wide as 25"
- Operation via ConvertPlus2 software including bar code labels for short and master rolls
- High rewinding accuracy of < 99.9%
- Single side shaft for quick set up





TECHNICAL DATA UA630

Max. media width.....	25"
Max. rewinding speed.....	3 ft/s
Max. diameter short roll.....	11 in/s
Max. diameter mother roll.....	16"
Sleeve diameter.....	3" (2" optional)
Trimming accuracy.....	< 99.99%*
Measuring accuracy.....	< 99.8%*
Max. medium thickness.....	1 mm*
Max. roll weight.....	55. lbs
Power supply.....	AC voltage 230V/50Hz - 60Hz
Power input.....	400 W
Working environment.....	41°F to 95°F
Dimensions (h x d x w).....	58" x 21" x 56"
Weight.....	331 lbs



* Depends on material being used.
We will gladly provide you with information.



TECHNICAL DATA **UA1650**



Max. medium width	65"
Max. rewinding speed	5 ft/s
Max. diameter short roll	11 in/s
Max. diameter mother roll	16"
Sleeve diameter	3" (2" optional)
Trimming accuracy.....	< 99.9%*
Measuring accuracy.....	< 99.8%*
Max. medium thickness.....	1 mm*
Max. roll weight.....	110 lbs
Power supply	AC voltage 230V/50Hz - 60Hz
Power input.....	1500W
Working environment	41°F to 95°F
Dimensions (h x d x w)	58" x 21" x 104"
Weight.....	661 lbs

* Depends on material being used.
We will gladly provide you with information.

UA1650



UA1650 REWINDING AND TRIMMING MACHINE

- PRECISION TRIMMING AS WIDE AS 65"

The highly efficient UA1650 rewinding and trimming machine is an absolute "must have" for film and vinyl manufacturers and distributors dealing with rewinding and finishing digital printing media, self-adhesive vinyl, car wrapping and window films, or more narrow flex- and flock films on a daily basis.

Unlike its "little sister" the UA630, the UA1650 offers a maximum working width of 65 inch. The UA1650 guarantees minimal material waste compared to manual processes. It offers high precision rewinding and trimming of films with an accuracy greater than 99.9%. In addition to the internal control unit, length measurement, rewinding as well as the entire production, the control

unit can be optionally run via touch PC using the ConvertPlus2 software. This also supports automatic label printing including bar code for short and master rolls for professional stock management and absolute minimisation of conversion and packaging errors.

The sleeve diameter is 3 inch, 2 inch are available as an option. The maximum diameter of mother rolls is 16 inch, short rolls can be wound up to a diameter of 11 inch. The maximum rewinding speed is 5ft/s, the maximum roll weight 110lbs. For film and vinyl distribution the UA1650 rewinding and trimming machine features impressive productivity and efficiency complete with extensive safety features.

FACTS & DATA

→ Rewinding speed up to 5ft/s

→ Rewinding and trimming as wide as 65"

→ Operation via ConvertPlus2 software including bar code labels for short and master rolls

→ High rewinding accuracy of < 99.9%

→ Adjustable tension shafts for quick set up

→ Automatic pneumatic tensioning durch Pneumatik



TECHNICAL DATA UA1650 ADW / UA1650 ADWS



Max. working width rewinding.....	65"
Max. diameter rewinding short roll.....	11"
Max. diameter mother roll	16"
Max. rewinding speed.....	5 ft/s
Max. working width slitting.....	75"
Max. roll diameter slitting	11"
Sleeve diameter	3" (2" optional)
Max. roll diameter slitting	8" (UA1650 ADW)
.....	2" (UA1650 ADWS)
Trimming accuracy.....	< 99.9%*
Measuring accuracy.....	< 99.8%*
Max. medium thickness.....	1 mm*
Max. roll weight.....	110 lbs
Power supply	AC voltage 230 V / 50 Hz - 60 Hz
Power input.....	1500 W
Working environment	41°F to 95°F
Dimensions (h x d x w)	58" x 21" x 124"
Weight.....	1543 lbs

* Depends on material being used.
We will gladly provide you with information.

UA1650 ADW CONVERTING CENTER

- REWINDING, TRIMMING AND SLITTING

The UA1650 ADW is the most successful and established converting center for film media worldwide. Besides high precision rewinding and automatic cross cutting, the UA1650 ADW supports exact slitting of numerous film media.

The swivel shaft of the UA1650 ADW can be operated easily and almost effortlessly, and the mounting and removal of empty cardboard rolls or ready-trimmed film rolls is accomplished in a matter of seconds. The adjustable end position of the swivel shaft guarantees ergonomic operation, even for your smaller staff members! The slitter is equipped with a guided rotary blade, which can be fixed if necessary. It is mounted on a smooth axial slide and can be very easily positioned using two digital displays for relative and absolute measurements. By pushing a button with your left hand, the axial slide is blocked and the film roll is tensioned, meaning it can now be slit with your right hand.

Film rolls with a maximum diameter of up to 16 inch may be mounted as mother rolls. Rolls with a maximum diameter of 11 inch may be rewound, the maximum diameter for slitting rolls is 11 inch. The maximum media width for rewinding is 65 inch, whereas rolls with a width up to 75 inch may be slit.

The UA1650 ADW can be operated either via the internal controller or the comprehensive ConvertPlus2 software. Rewinding is fast and precise down to <99.9%*, and the unwind / rewind shafts are automatically tensioned via compressed air.

FACTS & DATA

- Rewinding speed up to 5ft/s
- Rewinding and trimming as wide as 65 inch, slitting up to 75 "
- Operation via ConvertPlus2 software including bar code labels for short and master rolls
- High rewinding accuracy of <99.9%*
- Adjustable swivel shaft for perfect ergonomics
- Automatic pneumatic tensioning
- Easy to operate slitting unit with dual digital display



UA1650 ADWS PRECISION CONVERTING CENTER

The UA1650 ADWS is NEPATA GmbH's most accurate and comprehensive converting solution and a globally established system for the film trade, as well as film and tape production. In addition to high-precision winding and automatic cutting to length, the UA1650 ADWS also supports precise slitting of a variety of film-like media up to a rest of 2 inch in width.

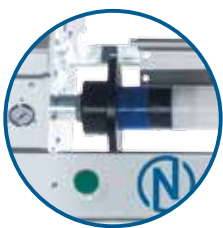
The continuous swivel shaft located at the top requires almost no force and is easy to use, while threading-in and threading-out of empty cardboard cores or finished slitted rolls takes mere seconds. The swivel shaft's adjustable stop position facilitates ergonomic working, even for the smallest employee. An automatic pneumatic coupling ensures vibration-free winding and slitting. The slitting unit features a rotating circular blade that is lockable, if necessary. It is mounted on a smooth-running axial slide and can easily be positioned in absolute and relative dimensions using two digital displays.

A simple touch of a button with the left hand blocks the axial slide and tensions the roll of film, which can now be slit using the right hand.

The unwinder can accommodate rolls of film with a diameter of up to 16 inch. A maximum diameter of 11 inch can be rewound and slit on the upper shaft. The maximum media width for winding is 65 inch, while rolls with a width of up to 75 inch can be loaded for slitting.

FACTS & DATA

- Pneumatic shaft coupling for vibration-free rewinding and slitting
- Minimum cutting width at the left end of the film only 2 "





1900 ADW / 1900 ADWS

TECHNICAL DATA 1900 ADW / 1900 ADWS



Max. medium width	75"
Max. roll diameter slitting	11"
Sleeve diameter	3" (2" optional)
Max. roll diameter slitting	8" (UA1900 ADW)
.....	2" (UA1900 ADWS)
Slitting accuracy	< 99.9%*
Max. roll weight.....	110 lbs
Power supply	AC voltage 230 V / 50 Hz - 60 Hz
Power input.....	1500 W
Working environment	41°F to 95°F
Dimensions (h x d x w)	58" x 21" x 124"
Weight.....	1543 lbs

* Depends on material being used.
We will gladly provide you with information.

1900 ADW SLITTING MACHINE

- PRECISION SLITTING AS WIDE AS 75 INCH

The professional slitting machine 1900 ADW was developed to facilitate rapid and precise slitting of various types of media. Its primary focus lies on cutting self-adhesive films, digital print media, flock materials, flex films and similar materials - with excellent accuracy.

The continuous swivel shaft is user-friendly and its operation requires almost no manual effort. Loading and unloading of paper cores and slit vinyl rolls is a matter of mere seconds. The swivel shaft's configurable end position guarantees an ergonomic operation, even for the smallest employee. The 1900 ADW features an optionally lockable guided rotary blade, mounted to a smooth-running axial slide. Thanks to its two digital displays, adjusting it to a relative dimension, as well as an absolute dimension is a cakewalk. A push of a button with the left hand suffices to block the axial slide and spin the roll, the right hand may now be used to slit the roll.

Tensioning of the slitting shaft happens automatically by means of compressed air. Various slitting modes are available, depending on one's desired mode of operation - the cutter may for example be permanently axially blocked, while film rolls may be swapped, or the film remains blocked and spinning, while allowing for the cutter to be repositioned.

Film rolls with a diameter of up to 11 inch may be slit. The 1900 ADW can process rolls as wide as 75 inch. The machine is controlled via the internal controller and may be complemented by the extensive ConvertPlus2 software.

FACTS & DATA

- Slitting up to 75 "
- Operation via ConvertPlus2 software including bar code labels
- Slitting accuracy of < 99.9%* for short and master rolls
- Adjustable swivel shaft for perfect ergonomics
- Automatic pneumatic tensioning
- Easy to operate slitting unit with dual digital display



1900 ADWS SLITTING MACHINE

The professional slitting machine 1900 ADWS was developed for fast and precise slitting of various types of media. Special emphasis was placed on excellent cut edges on self-adhesive films, digital print media, flock films, flex films and similar materials. These can be slit at the left edge of the film up to a minimum width of up to 2 inch.

The continuous swivel shaft requires almost no force and is easy to use, while threading-in and threading-out of empty cardboard cores or finished slitted rolls takes mere seconds. The swivel shaft's adjustable stop position facilitates ergonomic working, even for the smallest employee. An automatic pneumatic coupling ensures vibration-free winding and slitting. The 1900 ADWS features a rotating circular blade that is lockable, if necessary. It is mounted on a smooth-running axial slide and can easily be positioned in absolute and relative dimensions using two digital displays. A simple touch of a button with the left hand blocks the axial slide and tensions the roll of film, which can now be slit using the right hand.

The slitting shaft is automatically tensioned by means of compressed air. Various slitting modes are available, depending on the desired mode of operation. The knife can, for example, be permanently blocked axially, while rolls of film can be swapped, or the film remains tensioned, while the knife can be repositioned.

Rolls of film with a diameter of up to 11 inch can be slit. The 1900 ADWS can process rolls with a width of up to 75 inch. The machine is operated via the internal controller and can be complemented by the extensive ConvertPlus2 software.



FACTS & DATA

- Pneumatic shaft coupling for vibration-free rewinding and slitting
- Minimum cutting width at the left end of the film only 2 "

BENEFIT FROM THE ADVANTAGES OUR MACHINES HAVE TO OFFER

- Highly efficient rewinding, trimming and slitting of various film media
- Machines made in Germany, warranty and service in Germany
- Machine patented under European patent (patent number: 2426074).
US patent pending (14/884,688)
- Over 40 % gain in productivity compared to manual cutting
- Precision cuts (variance of less than 1%), therefore less clippings,
less waste, less rejects, less customer complaints
- Control software ConvertPlus2 with cut optimiser
(combining same colours or dimensions)
- Easy to use via internal controller or touch-PC (optional)
- Automatic label printing including bar codes for professional inventory
control and to prevent shipping errors

CONTACT

NEPATA GMBH
Hochstatt 6-8
85283 Wolnzach
Germany

Phone: +49 (0) 8442 95840-0
Fax: +49 (0) 8442 95840-30
E-Mail: mail@nepata.com
www.nepata.com

Member of:



Errors excepted, all data is subject to change without prior notice.